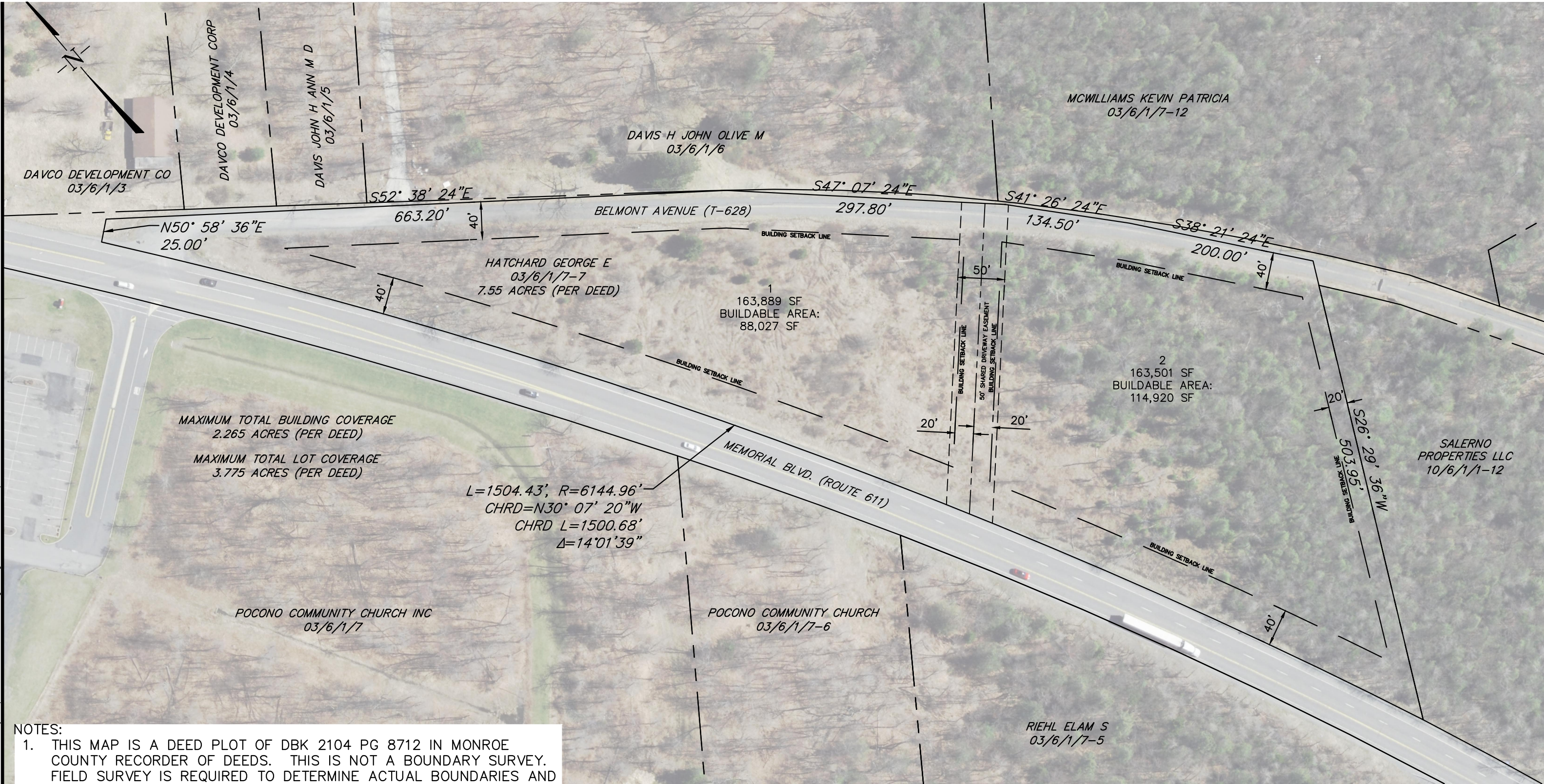


Y:\Projects\Private\PA-1217 Hatchard Land Use Analysis\PA-1217 Deed Plot.dwg Aug 25,2021 - 4:34pm



- NOTES:
1. THIS MAP IS A DEED PLOT OF DBK 2104 PG 8712 IN MONROE COUNTY RECORDER OF DEEDS. THIS IS NOT A BOUNDARY SURVEY. FIELD SURVEY IS REQUIRED TO DETERMINE ACTUAL BOUNDARIES AND LOCATIONS.
 2. ADJOINING LAND INFORMATION IS BASED ON MONROE CO. GIS.
 3. NO WETLANDS OR WATERCOURSES HAVE BEEN DELINEATED OR INVESTIGATED. WETLAND LOCATION BASED ON NATIONAL WETLANDS INVENTORY. FIELD DELINEATION IS REQUIRED FOR ACTUAL WETLAND LOCATIONS.
 4. SETBACKS BASED ON COOLBAUGH BOROUGH ZONING ORDINANCE. INTERPRETATION OF DIMENSIONAL REQUIREMENTS SHOULD BE CONFIRMED WITH THE ZONING OFFICER.
 5. SUBDIVISION SHOWN FOR LOTS 1 AND 2 AND DRIVEWAY ARE SHOWN FOR DEMONSTRATION PURPOSES ONLY



HanoverEngineering

Pocono Office

3355 Route 611, Suite 1
Bartonsville, PA 18321-7822

P:570.688.9550
F:570.688.9768

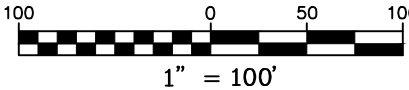
HanoverEng.com

**COOLBAUGH BOROUGH
MONROE COUNTY
PENNSYLVANIA**

THIS DOCUMENT IS THE PROPERTY OF HANOVER ENGINEERING ASSOCIATES, INC. ANY USE OF A COPY OF THIS DOCUMENT THAT DOES NOT CONTAIN AN ORIGINAL SEAL AND SIGNATURE IS STRICTLY PROHIBITED. THIS DOCUMENT IS NOT PUBLISHED AND ALL RIGHTS ARE RESERVED BY HANOVER ENGINEERING ASSOCIATES, INC. THIS PLAN HAS BEEN SEALED WITH EITHER A RED INK SEAL OR A CRIMP SEAL. IF NEITHER APPEARS ON THIS PLAN, POSSIBLE REPRODUCTIONS OR ALTERATIONS MAY HAVE BEEN MADE WITHOUT THE APPROVAL OR KNOWLEDGE OF THE SIGNATORY.

PLAN TITLE:
03.6.1.7-7 SITE MAP

PROJECT TITLE:
HATCHARD LAND USE ANALYSIS



DRAWN BY:
JPR

CHECKED BY:
MHM

SCALE:
1"=100'

DATE:
08/25/2021

PROJECT NO.
PA-1217

SHEET NO.
1 OF 1